

# ***100+ Million Reasons to Choose DirectKey™***

That's how many times DirectKey™ has opened doors in the past 5 years alone, in over 2000 cities around the world. With 500,000 openings each month and growing, every one of those doors is a stamp of approval and cause for confidence. It's the proof you need to take your property into the contactless era.



**Unity** DirectKey™



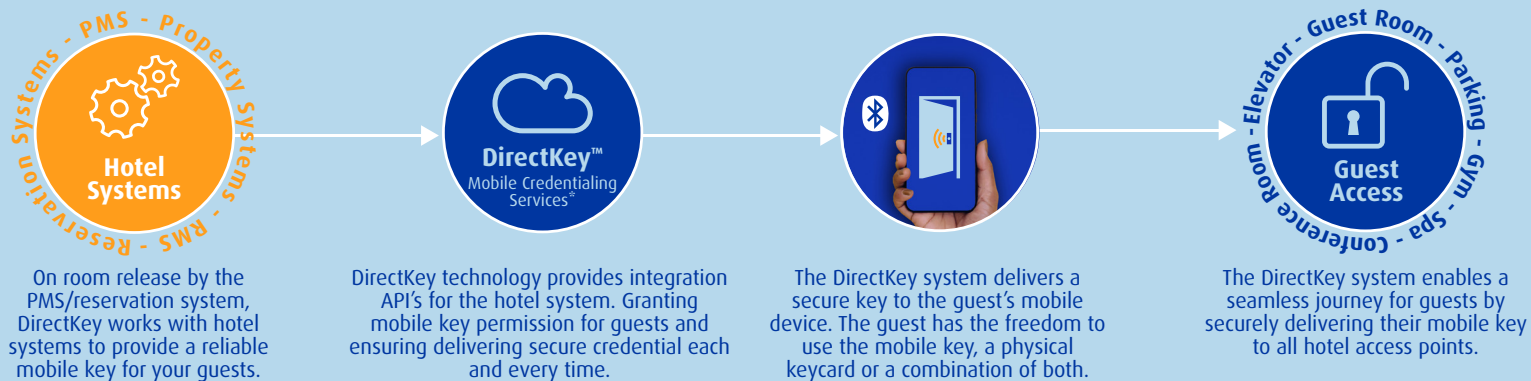
## A Direct Way to 'Go Contactless.'

Onity's cloud-based secure mobile credential platform offers multiple ways to seamlessly deploy mobile access at your property. Whether you want to use our DirectKey app, integrate DirectKey into your brand's loyalty app or integrate with a third-party app, DirectKey allows you to customize a seamless experience, enhancing your customer relationships.

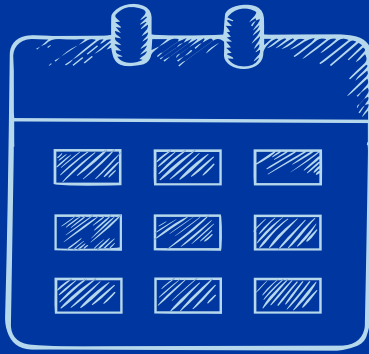
**Onity's off-the-shelf basic mobile solution.** Ideal for properties without mobile app initiatives, this is ideal for independent hotels and allows customization of the digital key branding and guest management usage. Onity will be here to help with set up and training.

**Customer integration.** For properties with an existing loyalty app, Onity allows for seamless integration. To help along the way, a Software Development Kit (SDK) is provided, as well as integration assistance.

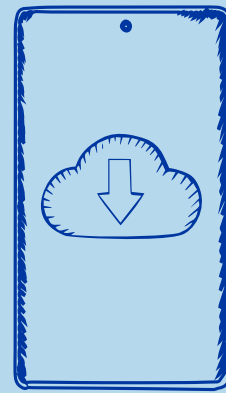
**Third party partner application.** We've partnered with leading PMS, RMS, and guest engagement platform providers to create an option for those without a mobile app initiative of their own, who want to offer a comprehensive customized guest experience and staff management platform.



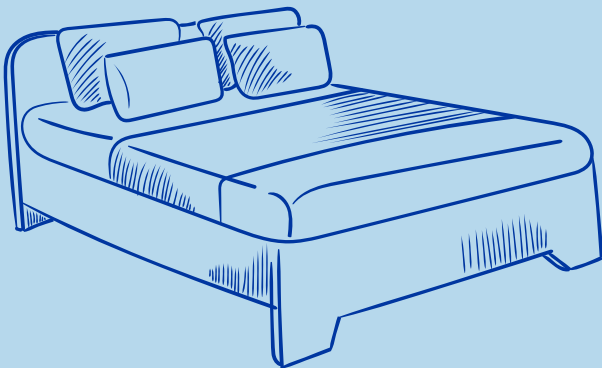
# How Mobile Access Works



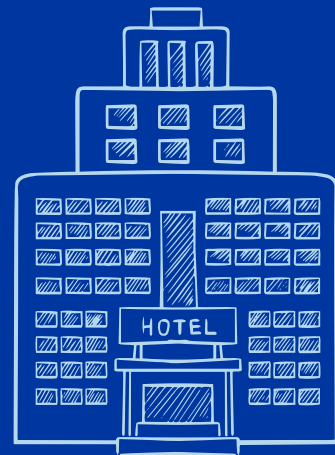
1. Guest makes reservation



2. Guest securely downloads and registers with hotel loyalty app



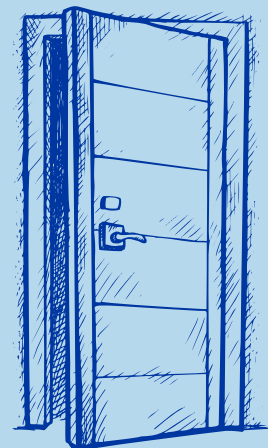
3. Hotels who provide mobile check-in can add DirectKey for contactless and quick room access



4. Guest arrives at the hotel



5. Since the guest is already checked in, they can go directly to their room without having to stop at reception



6. Guests use loyalty app with Bluetooth™ to unlock their room and shared common areas

***We've opened doors 100 million times.  
But we treat each one like it's our first.***



### ***A Direct Path to a Superior Guest Experience***

DirectKey Technology allows guests to skip the front desk and use Bluetooth® to unlock their door upon approach through a mobile app on their own devices. That means no searching for key cards or trying to hold a device up to the reader - just secure and conveniently smooth entry into doors across the property from parking garages to elevators, rooms and beyond. Today, contactless unlocking leaves guests feeling more safe.

### ***A Direct Way to Keep Properties and Guests Secure***

All mobile key credentials use 128-bit AES data encryption which provides an additional layer of security on top of locking system features such as user-access permissions and audit trails.

### ***A Direct Solution to Provide Consistency***

Our DirectKey platform provides a variety of ways to adopt mobile access. DirectKey is usable as an off-the-shelf mobile app and customized for your property. It also integrates into your brand's existing loyalty app or you can easily integrate DirectKey into a 3rd party application. Whatever your choice, DirectKey is the most direct way to enhance your relationship with customers - allowing you to customize the experience.

### ***A Direct Way to Save Time and Money***

Mobile credential management through DirectKey helps reduce operational expenses by reducing the costs of traditional key card management and printing (improving overall ROI). Your staff can deal with guests on a personal level, while you minimize operational costs by reducing front desk time and the infrastructure resources needed for traditional key cards.

***20+ Years Mobile Credentialing Experience.  
4+ Million Bluetooth Locking Devices Deployed.***

We've built and enhanced our mobile credentialing platform from its origins in the real estate industry, bringing DirectKey technology to more spaces and industries including Hospitality, Real Estate, Energy, Education, and Financial.



LEARN MORE AT [DIRECTKEY.ONITY.COM](https://directkey.unity.com)